



130m<sup>2</sup> | 2 bdrm

Consented & ready to build \$769,000

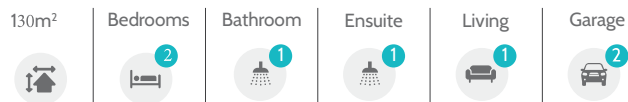
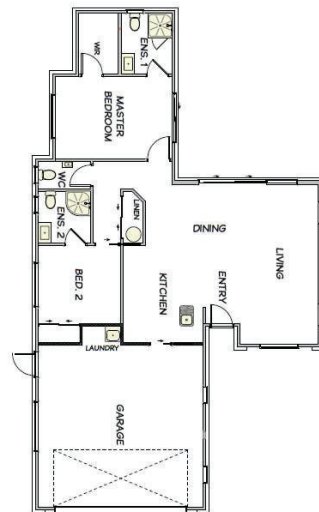
19 Hanmer Crescent, Bellgrove

Due to be started May 2026 so get in quick and purchase at the 'off plan' price!

This attractive standalone home would suit a range of people and lifestyles. Move into modern comfort with this beautifully designed house and land package in popular Rangiora. With quality finishes and thoughtful design, this home is perfect for families, downsizers, or first home buyers looking for style, space, and peace of mind.

House and Land Package Inclusions:

- Designer Kitchen with Tri stone Benchtops
- Haier Appliance package
- Belgotex quality Flooring
- Clothesline/Letterbox
- Vehicle Crossing, Driveway and Patio



All pictures and colours shown here are examples only.

Milestone Homes Canterbury

212 Main South Road, Christchurch

021358224

tania.crates@milestonehomes.co.nz

milestonehomes.co.nz facebook.com/MilestoneHomesChristchurch



# Milestone Homes Canterbury - Standard Specifications

## Guarantee

- 10 Year Master Build Guarantee
- 365 Day Remedial Defects Policy
- Building Consent, BRANZ & DBH Levies

## Excavations

- Excavation and hardfill for floor preparation
- Firth Rib-Raft floor system
- Drainage and service connections

## Framing

- Radiata KD H2 90mmx45mm stress graded timber
- 2400mm stud height
- Studs generally at 600mm centres
- All framing to building code

## Exterior

- Colorsteel Longrun
- Continuous Colorsteel Fascia, Guttering and Downpipes
- Brick range - Midlands Classic
- James Hardie Oblique feature cladding
- Thermally Broken aluminium joinery
- Frameless Thermal aluminium entry door with digital lock
- Dominator Newport insulated sectional garage door with two remotes

## Interior Linings

- 10mm GIB wall linings
- Ceilings lined with 13mm GIB on rondo battens
- Winstone Aqualine GIB to wet areas

## Doors, Hardwares & Finishes

- Flush Panel hollow core doors
- 60mm skirting with pine in wet areas
- Wall mounted doorstops with floor stop to entry
- Melamine wardrobe organiser to master bedroom walk-in robe
- Melamine shelf with hanger strip to all wardrobes
- Linen cupboard to have four ventilated shelves

## Joinery

- Milestone Tri-Stone benchtop range
- Soft-close doors and drawers to kitchen
- White melamine shelving to pantry
- Lazio 1.5 stainless steel under-mounted sink
- Haier contemporary appliance package

## Bathrooms

- Clearlite pacific showers 900x900mm
- Robertson Savon chrome tapware and slide showers
- Clearlite Pacific wall hung vanities with VC top
- Elementi Uno' toilet suites with soft closing seat
- Robertson Savon kitchen mixer chrome
- Polished edge 1000mm mirror to match vanity width

## Plumbing

- Rheem 300L hot water cylinder
- Drainage and storm water to Council laterals
- Two exterior hose fitting
- Robinhood Supertub to laundry

## Comprehensive Electrical Plan

- 15m mains cable
- Audio communications hub to garage
- HPM Legrand Excel Life switch gear
- LED downlights throughout (two per Bedroom)
- Two double power points per Bedroom
- Three double power points to master bedroom
- Separate extraction fan and wall heaters to both bathrooms
- Connection fee and temporary power

## Decoration & Floor Covering

- Comprehensive colour consultation
- Resene Paint System, with three coats of paint
- Belgotex Empire Extra heavy Duty nylon carpet
- 130kg carpet underlay
- Belgotex Province vinyl planking
- Tiling to vanity and bath splashbacks
- 750x900mm Glass splashback for kitchen

## Heating

- Panasonic wall mounted 7.1kw heat pump

## Exclusions

- Fridge, freezer, laundry appliances
- Soft landscaping (grass, garden beds etc)
- Curtains and drapes
- Exterior lighting and power
- Garage carpet
- Alarm, security cameras, additional lighting

## Get in touch!

The Milestone Canterbury team will help you throughout your journey to make sure all choices and decisions are the right ones for you.

## Milestone Homes Canterbury

212 Main South Road, Christchurch

021358 224

tania.crates@milestonehomes.co.nz

milestonehomes.co.nz