






# Under Construction

## Lot 9 Bellgrove, Rangiora

# Jennian

HOMES

## \$1,050,500

 4	 2	 2	 2	 2
---	---	---	---	---

459m2 Land | 194m2 House



Showcasing contemporary elegance, this home is be crafted with impeccable attention to detail ensuring both functionality and sophistication. In addition to the open plan kitchen, living and dining, this home features a separate living space for entertaining, a rumpus room, or play area for the kids.

Master bedroom suite features its own ensuite bathroom for added privacy. Three remaining bedrooms are generously sized and provide plenty of space for a growing family or overnight guests. The Panasonic heatpump provides efficient heating throughout the home and guarantees a warm and cozy atmosphere all year round.

### Canterbury

212 Main South Road, Sockburn, Christchurch

P 03 741 1436

E [canterbury@jennian.co.nz](mailto:canterbury@jennian.co.nz)

[jennian.co.nz](http://jennian.co.nz)

Find us on 

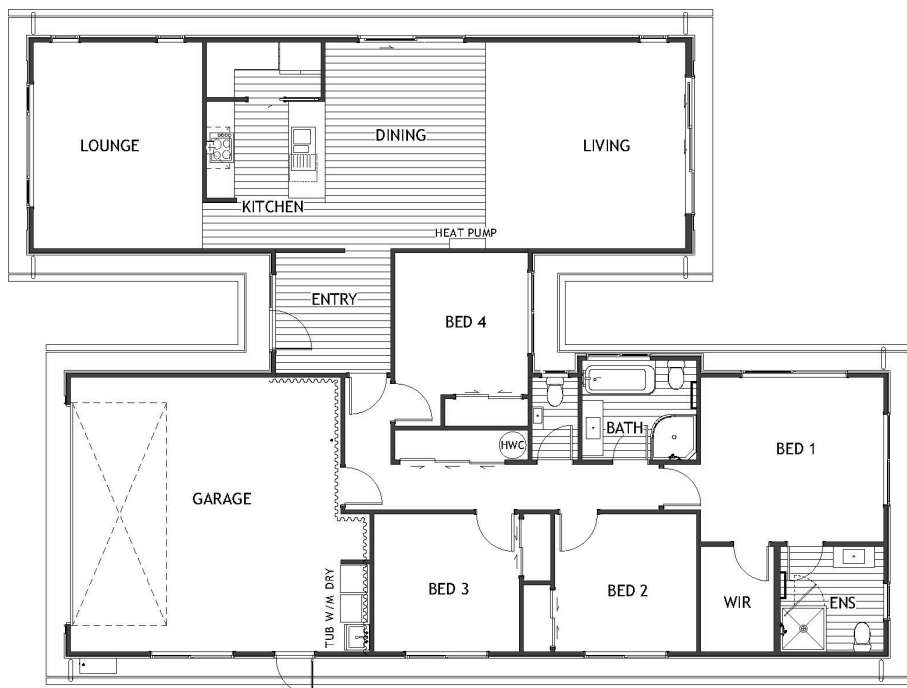


# Lot 9 Bellgrove

# Jennian

HOMES

4 2 2 2 2



## Package Includes:

- 194.3m<sup>2</sup> House
- 459m<sup>2</sup> Land
- Thermally Broken Joinery with Low-E Glass
- Custom NZ Made Designer Kitchen
- Fully Insulated Double Garage
- Quality Fisher & Paykel Appliances
- Wi-Fi compatible Panasonic Heatpump
- Landscaping (Driveway, Patios, Easy-Care Garden)
- 10yr Master Build Guarantee
- Extended 36mth Defect Warranty

Living Area 159.2 m<sup>2</sup>

Garage Area 34.8 m<sup>2</sup>

**Total Floor Area 194.3 m<sup>2</sup>**

Home Width 13.4 m

Home Length 18.5 m

Land Area 459 m<sup>2</sup>

## Canterbury

212 Main South Road, Sockburn, Christchurch

P 03 741 1436

E [canterbury@jennian.co.nz](mailto:canterbury@jennian.co.nz)

[jennian.co.nz](http://jennian.co.nz)

Find us on 

