

146m² | 3 bdrm

House & Land Package \$799,000

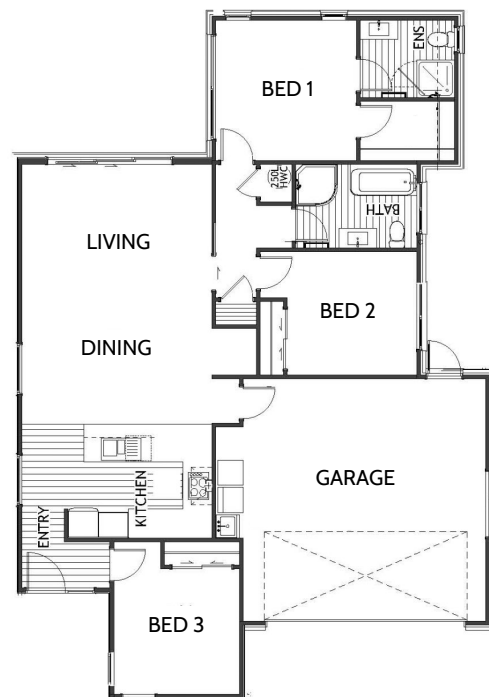
Lot 74 Bellgrove

Our Team have prepared this package with a fixed price and guaranteed build time of just 22 weeks!

This attractive standalone home would suit a range of people and lifestyles. The first two bedrooms whilst close in proximity, are pleasantly separated by the bathroom for privacy. Options are endless with the third bedroom! Set up an in-home office, create a hobby room, or utilise as a third bedroom, the freedom is yours!

House and Land Package Inclusions:

- Hard Landscaping
- Fencing
- Drive and Paths
- Patios
- Clothesline
- Letterbox



146m²



Bedrooms



Bathroom



Ensuite



Living



Garage



All pictures and colours shown here are examples only.

Milestone Homes Canterbury

📍 219 Main South Road, Christchurch

📞 03 343 0938 | 0800 MILESTONE

✉ canterbury@milestonehomes.co.nz

🌐 milestonehomes.co.nz [f facebook.com/MilestoneHomesChristchurch](https://www.facebook.com/MilestoneHomesChristchurch)

Milestone Homes Canterbury - Standard Specifications

Guarantee

- 10 Year Master Build Guarantee
- 365 Day Remedial Defects Policy
- Building Consent, BRANZ & DBH Levies

Excavations

- Excavation and hardfill for floor preparation
- Firth Rib-Raft floor system
- Drainage and service connections

Framing

- Radiata KD H2 90mmx45mm stress graded timber
- 2400mm stud height
- Studs generally at 600mm centres
- All framing to building code

Exterior

- Colorsteel Longrun/Gerard Heritage smooth metal tile roofing
- Continuous Colorsteel Fascia, Guttering and Downpipes
- Brick range - Midlands Classic or Firth Devonstone
- James Hardie Linea or Oblique feature cladding when required
- Resene Rockcote Plaster System
- Double glazed aluminium joinery
- APL attitude aluminium entry door with digital keypad
- Dominator Futura insulated sectional garage door with tworemotes

Interior Linings

- 10mm GIB wall linings
- Ceilings lined with 13mm GIB on rondo battens
- Winstone Aqualine GIB to wet areas

Doors, Hardware & Finishes

- Flush Panel hollow core doors
- 60mm skirting with pine in wet areas
- Wall mounted doorstops with floor stop to entry
- Melamine wardrobe organiser to master bedroom walk-in robe
- Melamine shelf with hanger strip to all wardrobes
- Linen cupboard to have four ventilated shelves

Joinery

- Milestone Tri-Stone benchtop range
- Soft-close doors and drawers to kitchen
- White melamine shelving to pantry
- Lazio 1.5 stainless steel under-mounted sink
- Fisher & Paykel contemporary appliance package

Bathrooms

- Clearlite back-to-wall bath with tiled splash
- Clearlite Sierra or Cezanne showers 1000x1000mm
- Robertson Savon chrome tapware and slide showers
- Clearlite Cashmere Classic wall hung vanities with VC top
- Ideal Standard 'Uno' toilet suites with soft closing seat
- Robertson Savon kitchen mixer chrome
- Bevelled edge 900mm mirror to match vanity width

Plumbing

- Rheem 300L hot water cylinder
- Drainage and storm water to Council laterals
- Two exterior hose fitting
- Robinhood Supertub to laundry

Comprehensive Electrical Plan

- 15m mains cable
- Audio communications hub to garage
- HPM Legrand Excel Life switch gear
- LED downlights throughout (two per Bedroom)
- Two double power points per Bedroom
- Three double power points to master bedroom
- Separate extraction fan and wall heaters to both bathrooms
- Connection fee and temporary power

Decoration & Floor Covering

- Comprehensive colour consultation
- Resene Paint System, with three coats of paint
- Belgotex Delta solution dyed nylon carpet
- 120kg carpet underlay
- Belgotex Province vinyl planking
- Tiling to vanity and bath splashbacks
- 750x900mm Glass splashback for kitchen

Heating

- Panasonic wall mounted heat pump

Exclusions

- Fridge, freezer, laundry appliances
- Soft landscaping (grass, garden beds etc)
- Curtains and drapes
- Exterior lighting and power
- Garage carpet
- Alarm, security cameras, additional lighting

Get in touch!

The Milestone Canterbury team will help you throughout your journey to make sure all choices and decisions are the right ones for you.

Milestone Homes Canterbury

-  219 Main South Road, Christchurch
-  03 343 0938 | 0800 MILESTONE
-  canterbury@milestonehomes.co.nz
-  milestonehomes.co.nz