

\$595,000

mikegreerhomes

Rangiora

Lot 140 Bellgrove, 4 Ruataniwha Avenue



for sale

dwelling size	section size
110 m ²	201 m ²

homes
for
sale


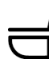

This two bedroom home is perfectly designed for the site, as the home features an open plan living and kitchen area that connects well to the outdoor space. The main bathroom is well appointed with a shower, and with neutral decor and quality fixtures and fittings throughout, and a great location close to schools and amenities, this home really presents good value for money.

Bellgrove has been meticulously designed to offer living spaces and choices for all, promising a serene neighborhood that you'll love. Conveniently located just 30 minutes away from Christchurch city centre, Bellgrove offers an idyllic lifestyle within easy reach of all the amenities and attractions the city has to offer. The subdivision thoughtfully encompasses outdoor living spaces and neighboring recreational facilities, creating a well-rounded living experience.

more features.

- + Close to Local Amenities
- + After Sales Care Program
- + 10 Year Registered Master Build Guarantee
- + Samsung Appliances
- + Stone Benchtop
- + Single Car Garaging
- + Tiled Floors to Wet Areas
- + Tiled Shower

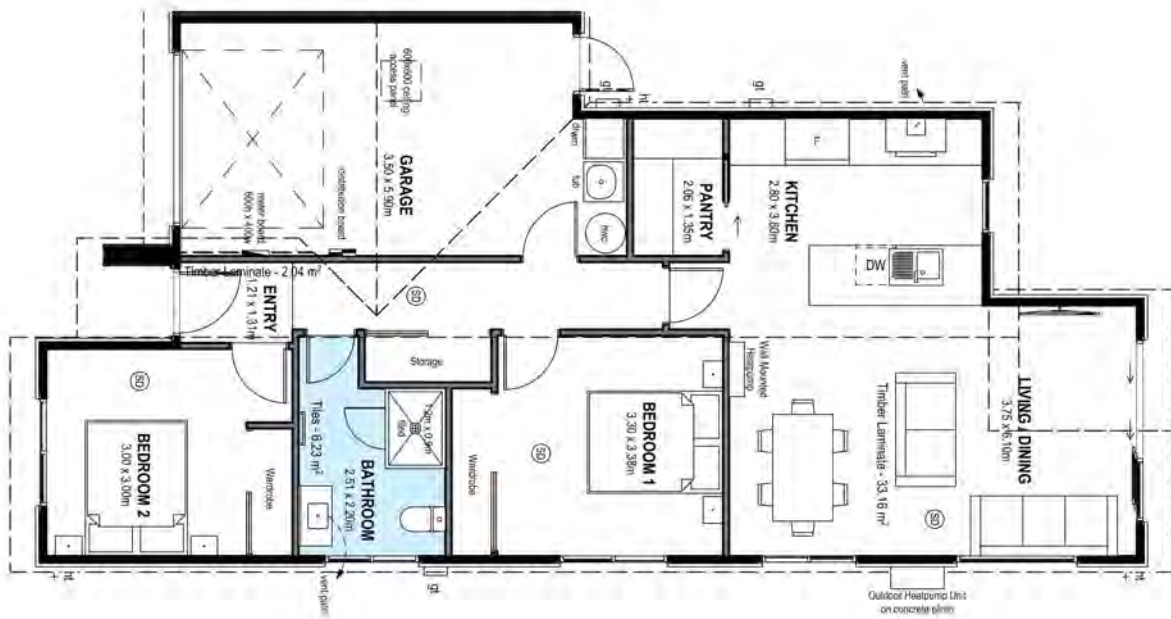
Bellgrove Lot 140 Bellgrove, 4 Ruataniwha Avenue

dwelling size	section size	2	1	1	1	1
110 m ²	201 m ²					

KiwiSaver
Poua he Oranga

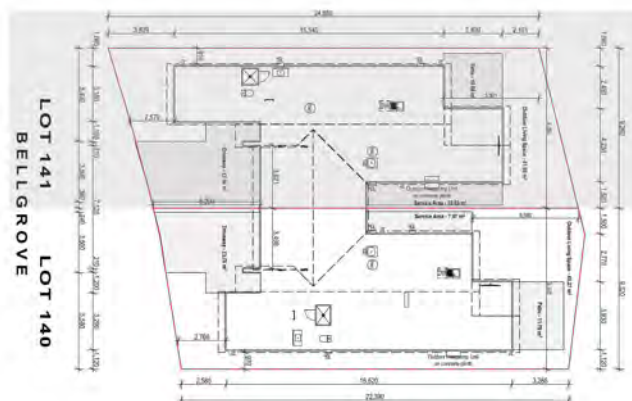


N3015



After Sales Care

At Mike Greer Homes we are committed to making the build journey as stress-free as possible. Our After Sales Care programme addresses any maintenance issues and ensures that any remedial work is undertaken once it is logged and approved.



Disclaimer. While every reasonable effort has been made by Mike Greer Homes to ensure the information correctly illustrates the dwelling and section, this material may only be used by the Purchaser for illustrative and guidance purposes. Mike Greer Homes accepts no responsibility for any differences, errors or omissions which may become apparent during or on completion of the dwelling.