

# \$789,000

 **mikegreerhomes**

## Rangiora

Lot 2001 Bellgrove 7 Inch Crescent Waimakariri Distri



# for sale

dwelling size | section size  
152 m<sup>2</sup> | 432 m<sup>2</sup>

homes  
for  
sale

This stylish two double bedroom home has a spacious open plan design and a North facing easy care section that is fully landscaped and ideal for relaxing and entertaining. Both of the bedrooms are well appointed, with a family bathroom and separate WC. The home has been finished to a high standard with quality fixtures and fittings throughout. It offers an internal access single garage as well as a separate double garage and has all driveways and fencing included in the sale price.

Bellgrove has been meticulously designed to offer living spaces and choices for all, promising a serene neighborhood that you'll love. Conveniently located just 30 minutes away from Christchurch city centre, Bellgrove offers an idyllic lifestyle within easy reach of all the amenities and attractions the city has to offer. The subdivision thoughtfully encompasses outdoor living spaces and neighboring recreational facilities, creating a well-rounded living experience.

### more features.

- ✦ Three Car Garaging
- ✦ Close to Local Amenities
- ✦ After Sales Care Program
- ✦ Boundary Fences
- ✦ Designer Kitchen
- ✦ LED Lighting
- ✦ 10 Year Registered Master Build Guarantee
- ✦ Samsung Appliances

### Turn Key






A Turn Key home is an all-inclusive package that only requires 10% deposit.

bringing you **more**

03 313 0319

[mikegreerhomes.co.nz](http://mikegreerhomes.co.nz)

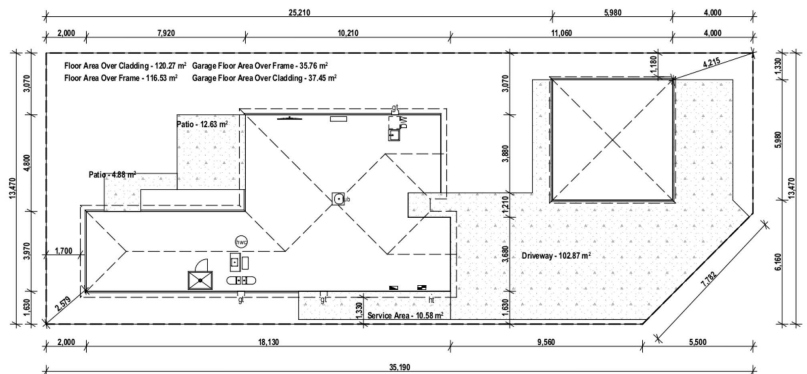
**Bellgrove** Lot 2001 Bellgrove 7 Inch Crescent Waimakariri District

dwelling size | section size | 2 | 2 | 1 | 1 | 0  
 152 m<sup>2</sup> | 432 m<sup>2</sup> |  |  |  |  | 



**After Sales Care**

At Mike Greer Homes we are committed to making the build journey as stress-free as possible. Our After Sales Care programme addresses any maintenance issues and ensures that any remedial work is undertaken once it is logged and approved.



Disclaimer. While every reasonable effort has been made by Mike Greer Homes to ensure the information correctly illustrates the dwelling and section, this material may only be used by the Purchaser for illustrative and guidance purposes. Mike Greer Homes accepts no responsibility for any differences, errors or omissions which may become apparent during or on completion of the dwelling.