

\$739,000

mikegreerhomes

Rangiora

Lot 2002 Bellgrove



for sale

dwelling size | section size
139 m² | 429 m²

homes
for
sale

This stylish three double bedroom home has a spacious open plan design and a North facing easy care landscaped section and ideal for relaxing and entertaining. All of the bedrooms are well appointed, with a separate family bathroom and ensuite. The home has been finished to a high standard with quality fixtures and fittings throughout. It offers an internal access single garage and has all driveways and fencing included in the sale price.

Bellgrove has been meticulously designed to offer living spaces and choices for all, promising a serene neighborhood that you'll love. Conveniently located just 30 minutes away from Christchurch city centre, Bellgrove offers an idyllic lifestyle within easy reach of all the amenities and attractions the city has to offer. The subdivision thoughtfully encompasses outdoor living spaces and neighboring recreational facilities, creating a well-rounded living experience.

more features.

- ✦ After Sales Care Program
- ✦ Boundary Fences
- ✦ Designer Kitchen
- ✦ Ensuite
- ✦ Fixed Price
- ✦ LED Lighting
- ✦ 10 Year Registered Master Build Guarantee
- ✦ Samsung Appliances

Turn Key

A Turn Key home is an all-inclusive package that only requires 10% deposit.

bringing you **more**

03 313 0319

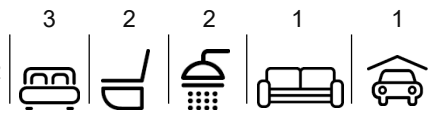
mikegreerhomes.co.nz

Bellgrove Lot 2002 Bellgrove

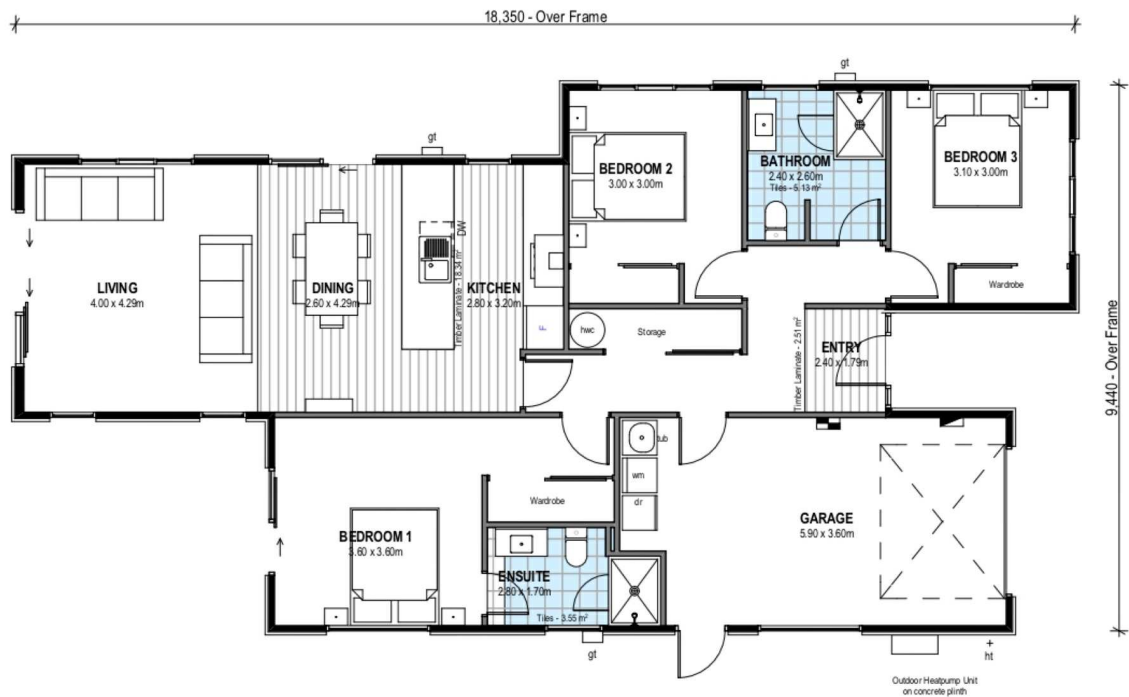
dwelling size | section size

139 m² | 429 m²

3 2 2 1 1

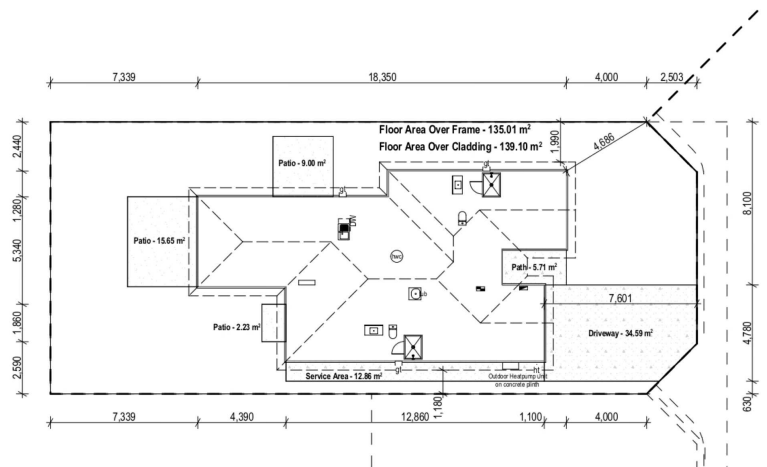



N2842



After Sales Care

At Mike Greer Homes we are committed to making the build journey as stress-free as possible. Our After Sales Care programme addresses any maintenance issues and ensures that any remedial work is undertaken once it is logged and approved.



Disclaimer. While every reasonable effort has been made by Mike Greer Homes to ensure the information correctly illustrates the dwelling and section, this material may only be used by the Purchaser for illustrative and guidance purposes. Mike Greer Homes accepts no responsibility for any differences, errors or omissions which may become apparent during or on completion of the dwelling.