

# \$865,000

# mikegreerhomes

## Rangiora

Lot 211 Bellgrove, 27 William Bell Street



Artist Impression Only

# for sale

dwelling size | section size  
181 m<sup>2</sup> | 402 m<sup>2</sup>

homes  
for  
sale

Set on a landscaped section, this home has been thoughtfully designed to maximise space and comfortable living. With four double bedrooms, a family bathroom, separate WC and an ensuite, the home is well appointed and suited to a range of lifestyles. The open plan living, kitchen and dining area creates a spacious central hub that integrates nicely with the outdoor entertaining area and the garden. Located in a popular area within close proximity to schools, shops and other amenities, this home presents great value for those looking for a new family home.

Bellgrove has been meticulously designed to offer living spaces and choices for all, promising a serene neighborhood that you'll love. Conveniently located just 30 minutes away from Christchurch city centre, Bellgrove offers an idyllic lifestyle within easy reach of all the amenities and attractions the city has to offer. The subdivision thoughtfully encompasses outdoor living spaces and neighboring recreational facilities, creating a well-rounded living experience.






### Turn Key

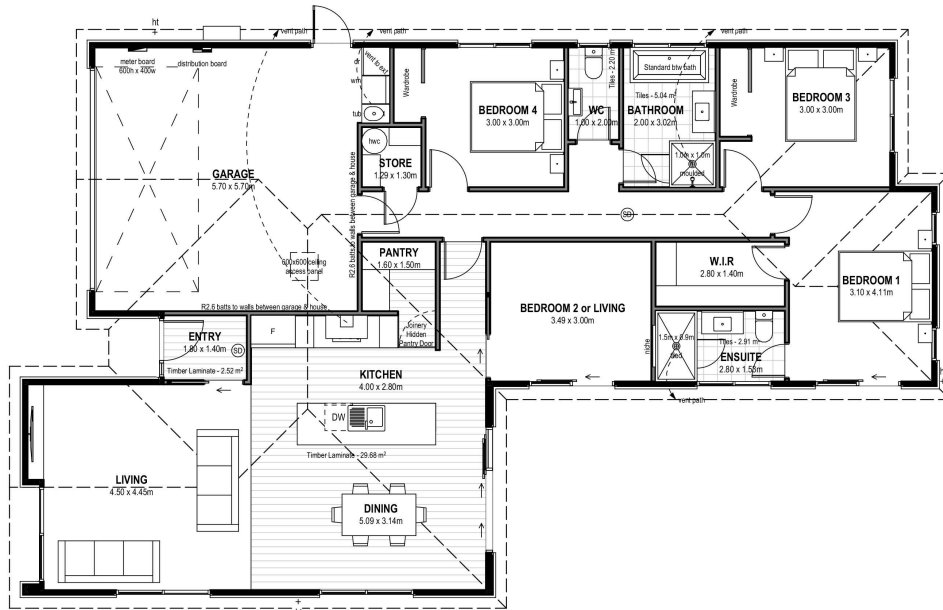
A Turn Key home is an all-inclusive package that only requires 10% deposit.

### more features.

- ✦ Close to Local Amenities
- ✦ After Sales Care Program
- ✦ Ensuite
- ✦ Tiled Floors to Wet Areas
- ✦ Walk-in Pantry
- ✦ Walk-in Wardrobe

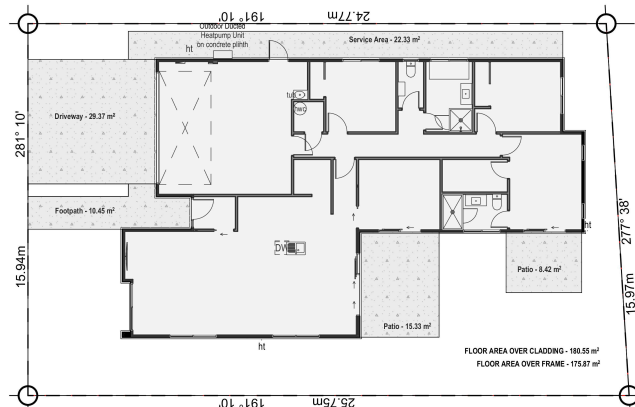
Bellgrove Lot 211 Bellgrove, 27 William Bell Street

|                    |                    |   |   |   |   |   |
|--------------------|--------------------|---|---|---|---|---|
| dwelling size      | section size       | 4   | 2   | 2   | 1   | 2   |
| 181 m <sup>2</sup> | 402 m <sup>2</sup> |  |  |  |  |  |



### After Sales Care

At Mike Greer Homes we are committed to making the build journey as stress-free as possible. Our After Sales Care programme addresses any maintenance issues and ensures that any remedial work is undertaken once it is logged and approved.



Disclaimer. While every reasonable effort has been made by Mike Greer Homes to ensure the information correctly illustrates the dwelling and section, this material may only be used by the Purchaser for illustrative and guidance purposes. Mike Greer Homes accepts no responsibility for any differences, errors or omissions which may become apparent during or on completion of the dwelling.