

\$749,000

mikegreerhomes

Rangiora

Lot 59 Bellgrove



for sale

dwelling size | section size
148 m² | 391 m²

homes
for
sale

Offering three double bedrooms and an open plan living, kitchen and dining area, this home is perfectly designed to maximise space and indoor/outdoor flow. The home features an internal access single garage and landscaped private section perfect for entertaining. Complementing the living and bedroom spaces are the family bathroom and ensuite that are both well-appointed with quality fixtures and fittings.

Bellgrove has been meticulously designed to offer living spaces and choices for all, promising a serene neighborhood that you'll love. Conveniently located just 30 minutes away from Christchurch city centre, Bellgrove offers an idyllic lifestyle within easy reach of all the amenities and attractions the city has to offer. The subdivision thoughtfully encompasses outdoor living spaces and neighboring recreational facilities, creating a well-rounded living experience.

more features.

- ✦ Boundary Fences
- ✦ Ensuite
- ✦ Driveway and Patios Included
- ✦ LED Lighting
- ✦ 10 Year Registered Master Build Guarantee
- ✦ Open Plan Living
- ✦ Single Car Garaging
- ✦ Tiled Floors to Wet Areas

 **Turn Key**

A Turn Key home is an all-inclusive package that only requires 10% deposit.

bringing you **more**

03 313 0319

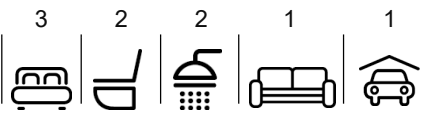
mikegreerhomes.co.nz

Bellgrove Lot 59 Bellgrove

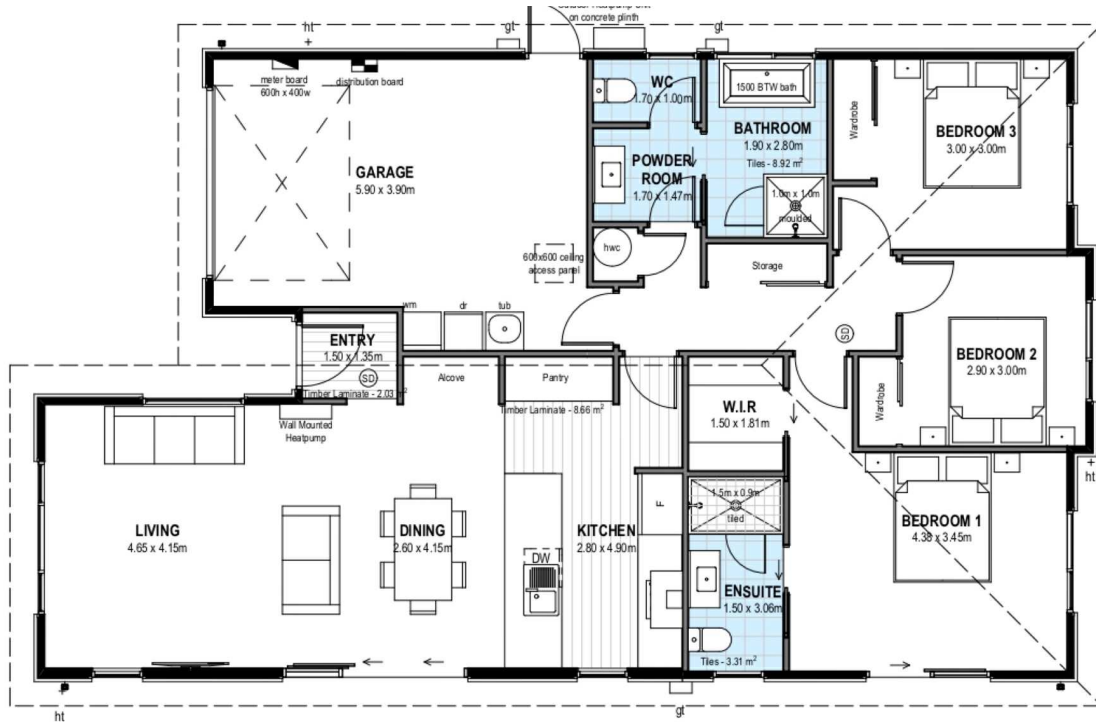
dwelling size | section size

148 m² | 391 m²

3 2 2 1 1




N2844



After Sales Care

At Mike Greer Homes we are committed to making the build journey as stress-free as possible. Our After Sales Care programme addresses any maintenance issues and ensures that any remedial work is undertaken once it is logged and approved.

Disclaimer. While every reasonable effort has been made by Mike Greer Homes to ensure the information correctly illustrates the dwelling and section, this material may only be used by the Purchaser for illustrative and guidance purposes. Mike Greer Homes accepts no responsibility for any differences, errors or omissions which may become apparent during or on completion of the dwelling.

