

# \$679,000

# mikegreerhomes

## Rangiora

Lot 77 Bellgrove



# for sale

dwelling size | section size  
121 m<sup>2</sup> | 348 m<sup>2</sup>

homes  
for  
sale

This attractive two double bedroom, one bathroom with separate WC, home has a spacious and practical floor plan that would suit a range of people and lifestyles. A North facing open plan living/dining/kitchen area offers easy access to the outdoor entertaining area within the landscaped section. The home also offers an internal access single garage and quality fixtures and fittings throughout, plus it benefits from a good location close to all amenities.

Bellgrove has been meticulously designed to offer living spaces and choices for all, promising a serene neighborhood that you'll love. Conveniently located just 30 minutes away from Christchurch city centre, Bellgrove offers an idyllic lifestyle within easy reach of all the amenities and attractions the city has to offer. The subdivision thoughtfully encompasses outdoor living spaces and neighboring recreational facilities, creating a well-rounded living experience.

### more features.

- ✦ After Sales Care Program
- ✦ Boundary Fences
- ✦ Designer Kitchen
- ✦ Driveway and Patios Included
- ✦ LED Lighting
- ✦ 10 Year Registered Master Build Guarantee
- ✦ Samsung Appliances
- ✦ Single Car Garaging

### Turn Key






A Turn Key home is an all-inclusive package that only requires 10% deposit.

bringing you **more**

03 313 0319

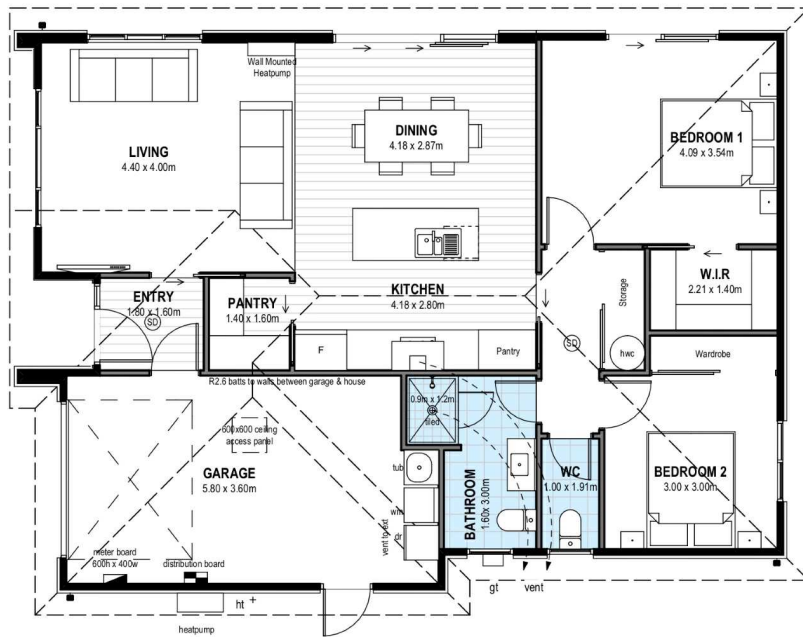
[mikegreerhomes.co.nz](http://mikegreerhomes.co.nz)

# Bellgrove Lot 77 Bellgrove

|                    |                    |   |   |   |   |   |
|--------------------|--------------------|---|---|---|---|---|
| dwelling size      | section size       | 2   | 2   | 1   | 1   | 1   |
| 121 m <sup>2</sup> | 348 m <sup>2</sup> |  |  |  |  |  |

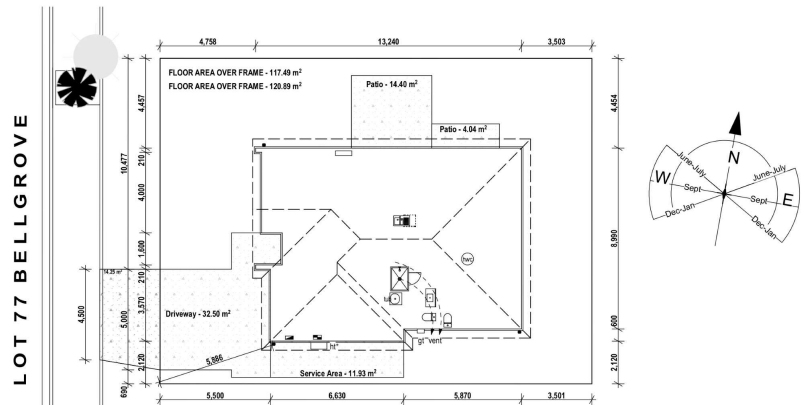


N2846



## After Sales Care

At Mike Greer Homes we are committed to making the build journey as stress-free as possible. Our After Sales Care programme addresses any maintenance issues and ensures that any remedial work is undertaken once it is logged and approved.



Disclaimer. While every reasonable effort has been made by Mike Greer Homes to ensure the information correctly illustrates the dwelling and section, this material may only be used by the Purchaser for illustrative and guidance purposes. Mike Greer Homes accepts no responsibility for any differences, errors or omissions which may become apparent during or on completion of the dwelling.